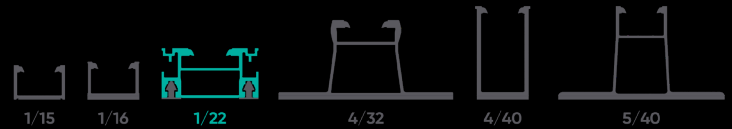


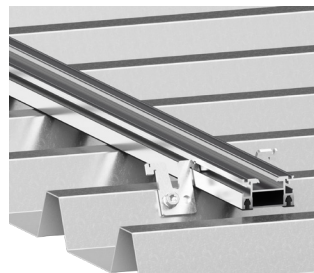
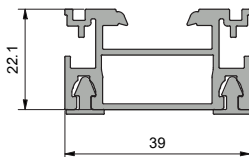


mounting
systems

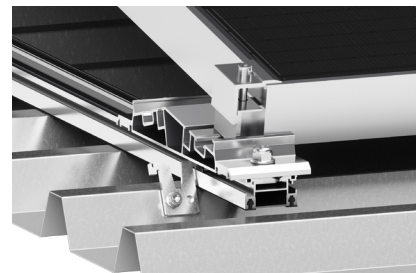


Rail 1/22* with EPDM

| | |
|------------------|---|
| Application | Trapeze |
| Material | Aluminium (EN-AW-6063 T66) |
| Colour | Aluminium: Natural |
| Weight | 0.716 kg/m |
| Dimensions H x W | 22.1 x 39 mm |
| Static values | I_x 1.213 cm ⁴ I_y 4.313 cm ⁴ W_x 0.955 cm ³ W_y 2.210 cm ³ A 2.470 cm ² |
| Article addition | Top connection with Clickstone and t-head bolt with lock nut connection for the additional component possible. |
| Accessories | Side trapeze fastener 1/22 (720-1710) Connector 1/22 (720-1671) Thin sheet screw 5.5x25 mm (720-1188) |



Rail 1/22 with
Side trapeze fastener 1/22

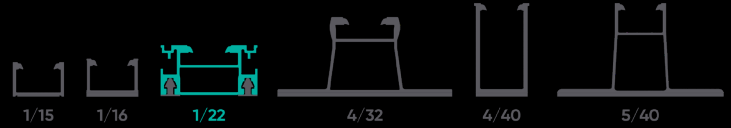


Rail 1/22 is compatible
with Light System





mounting
systems



Rail 1/22* with EPDM

| Length | Colour | Item No. | Ref. No. |
|---------|---------|----------|----------|
| 395 mm | Natural | 720-1718 | 712-0252 |
| 2400 mm | Natural | 712-0253 | 712-0253 |
| 6000 mm | Natural | 712-0254 | 712-0254 |

* The first number in the designation of the rail profiles stands for the moment of inertia cm⁴ and the second number describes the height mm of the rail.



Technical amendments reserved.
2024 © Mounting Systems GmbH