

Copper Tube Terminals



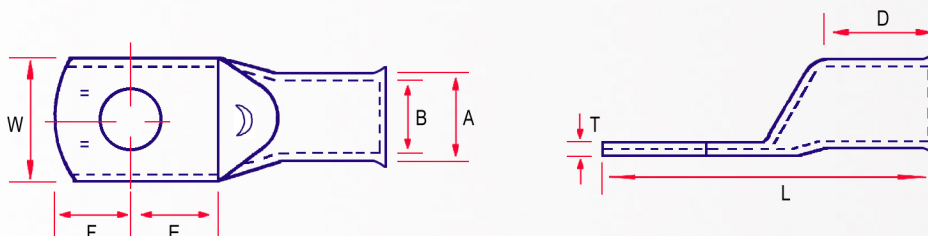
TQ Range

Application: Un-insulated heavy duty terminals suitable for power cables up to 1000 volts.

Material: Manufactured from seamless copper tube to BS EN 12449:1999

Finish: Electro Tin plated to BS 1872:1974

- All terminals are manufactured from 99.5% copper and fully annealed to ensure optimum ductility to avoid severe deformation such as cracking and splitting when crimped
- Terminals are supplied with an inspection window which enables the user to ensure full and correct insertion of the conductor and a flared entry ensures a smooth transition from terminal to conductor
- Internal barrel diameters suit standard cables as defined in BS 6360
- All SWA terminals are identified on the palm with cable size (and stud hole size) to ensure correct selection of the appropriate tool and dies



Tool Selection

Cond. Size mm ² Strand / Flex.	Part No.	Stud Hole	Dimensions mm							Supplied With Dies Crimp Profile	Mechanical Crimp Tools		Hydraulic Crimp Tools							
			A	B	W	E	F	D	L		T	Y	Y	Y	Y	Y	N	N		
10 / 10	10-5TQ	M5	6.9	4.4	11.0	5.9	5.1	9.0	27.0	2.0										
	10-6TQ	M6	6.9	4.4	11.0	5.9	5.1	9.0	27.0	2.0										
	10-8TQ	M8	6.9	4.4	14.0	9.75	8.25	11.0	35.0	1.6										
	10-10TQ	M10	6.9	4.4	16.0	12.0	10.0	10.0	39.0	1.5										
	10-12TQ	M12	6.9	4.4	18.0	12.0	10.0	10.0	39.0	1.3										
16 / 16	16-5TQ	M5	8.0	5.6	11.0	5.9	5.1	11.0	29.5	2.2										
	16-6TQ	M6	8.0	5.6	11.0	5.9	5.1	11.0	29.5	2.2										
	16-8TQ	M8	8.0	5.6	14.0	9.75	8.25	11.0	38.0	1.7										
	16-10TQ	M10	8.0	5.6	16.0	12.0	10.0	11.0	42.0	1.5										
	16-12TQ	M12	8.0	5.6	18.0	12.0	10.0	11.0	42.0	1.3										
25 / 25	25-5TQ	M5	9.5	7.0	13.5	9.75	8.25	13.0	40.0	2.4										
	25-6TQ	M6	9.5	7.0	13.5	9.75	8.25	13.0	40.0	2.4										
	25-8TQ	M8	9.5	7.0	13.5	9.75	8.25	13.0	40.0	2.4										
	25-10TQ	M10	9.5	7.0	16.0	12.0	10.0	13.0	44.0	2.0										
	25-12TQ	M12	9.5	7.0	18.0	12.0	10.0	13.0	44.0	1.8										

Blank Palm and Angle Terminals available on request.