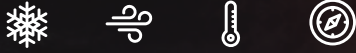


HC MONO TB
430 - 450 Watt



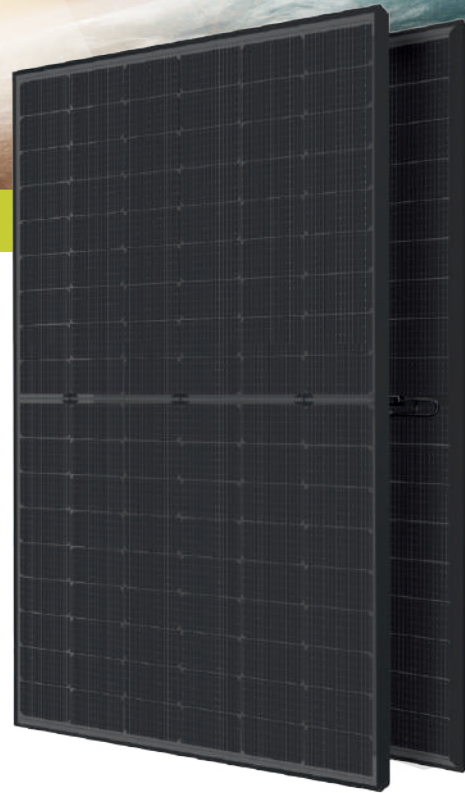
KEY FEATURES

Our solar cells offer high conversion efficiency to ensure the highest quality

Our high performing modules have an industry low tolerance of 0 ~ +5W

The modules can withstand high wind-pressure, snow loads and extreme temperatures

Passed IEC 5400 Pa mechanical loading test
PID Resistance Available

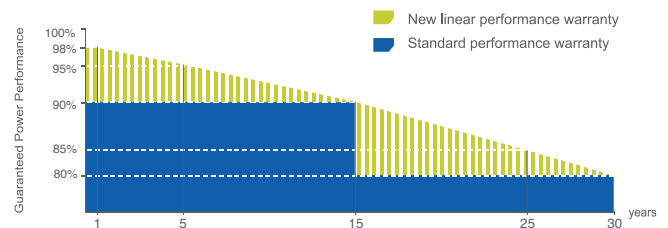


QUALITY AND SAFETY

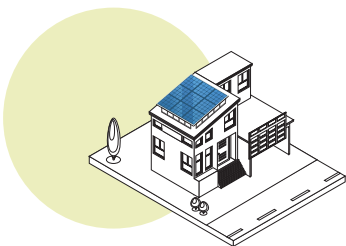
- Industry leading power output warranty
 15 years/90%
 30 years/80%
- 25-year warranty on materials & workmanship
- Fire Rating: Class 1



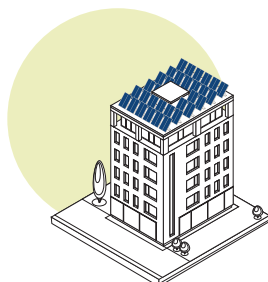
PREMIUM PERFORMANCE WARRANTY



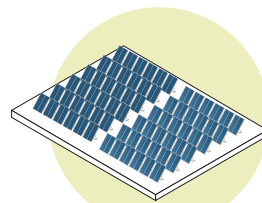
APPLICATIONS



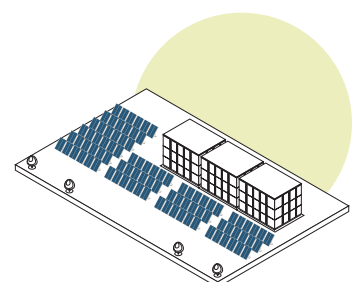
On-grid residential roof-tops



On-grid commercial - industrial roof-tops

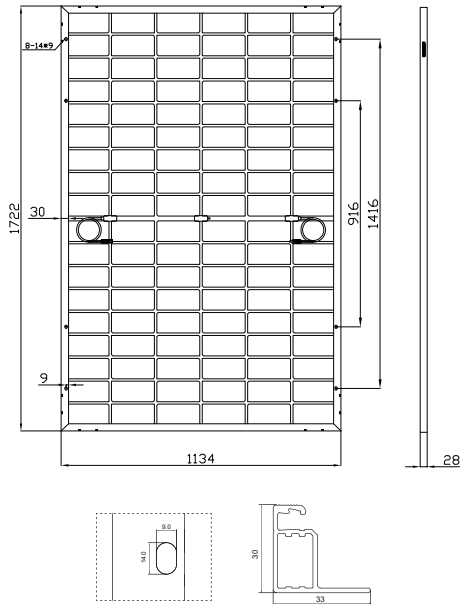


Solar power plants



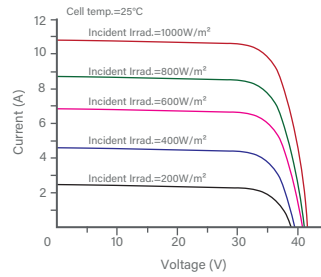
Off-grid systems

ENGINEERING DRAWINGS

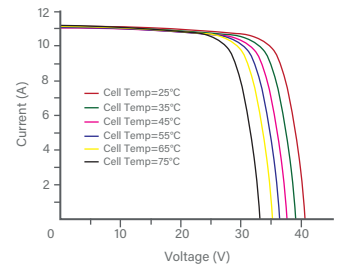


ELECTRICAL PERFORMANCE & TEMPERATURE DEPENDENCE

Current-Voltage & Power-Voltage Curves at Different Irradiances



Current-Voltage Curves at Different Temperatures



PACKAGING CONFIGURATION

Standard packaging	72 pcs / pallet
Module quantity per 20' container	216 pcs
Module quantity per 40' container	936 pcs

MECHANICAL CHARACTERISTICS

Cell Type	Orion N-Type Mono-crystalline (182x91mm)
No. of cells	108 (6x18)
Dimensions	1722x1134x30mm
Weight	22 kg
Front Glass	3.2mm, Anti-Reflecting Coating
Junction Box	Anodized Aluminium Alloy / IP68 Rated
Output Cables	TÜV 1x4.0mm²/UL 12AWG, Length:1100mm

SPECIFICATIONS

STC



Irradiance 1000W/m²



Module Temperature 25°C



AM=1.5

Module Type ⁽¹⁾	TKA430M-108B		TKA435M-108B		TKA440M-108B		TKA445M-108B		TKA450M-108B	
	STC ⁽²⁾	NMOT ⁽³⁾	STC ⁽²⁾	NMOT ⁽³⁾	STC ⁽²⁾	NMOT ⁽³⁾	STC ⁽²⁾	NMOT ⁽³⁾	STC ⁽²⁾	NMOT ⁽³⁾
Maximum Power (P _{max})	430Wp	321Wp	435Wp	325Wp	440Wp	329Wp	445Wp	333Wp	450Wp	337Wp
Maximum Power Voltage (V _{mp})	33.16V	30.26V	33.36V	30.44V	33.56V	30.62V	33.76V	33.81V	33.96V	30.95V
Maximum Power Current (I _{mp})	12.97A	10.61A	13.05A	10.68A	13.12A	10.75A	13.19A	10.82A	13.25A	10.89A
Open-circuit Voltage (V _{oc})	39.43V	37.02V	39.63V	37.21V	39.83V	37.40V	40.03V	37.58V	40.23V	37.76V
Short-circuit Current (I _{sc})	14.01A	11.31A	14.08A	11.37A	14.15A	11.43A	14.23A	11.49A	14.31A	11.55A
Module Efficiency (%)	22.02%		22.28%		22.53%		22.79%		23.04%	
V _{oc} and I _{sc} tolerance	±3%									
Operating Temperature (°C)	-40°C ~ +85°C									
Maximum system voltage	1500V									
Maximum series fuse rating	25A									
Power tolerance	0 ~ +5W									
Temperature coefficients of P _{max}	-0.29%/°C									
Temperature coefficients of V _{oc}	-0.25%/°C									
Temperature coefficients of I _{sc}	0.045%/°C									
Nominal operating cell temperature (NOCT)	45±2 °C									